



**ALASKA DIVISION OF HOMELAND SECURITY &
EMERGENCY MANAGEMENT**



SITUATION REPORT 22-007 • JANUARY 07, 2022

Toll-Free 1.800.478.2337

Anchorage Area 907.428.7000

SEOC 907.428.7100

<p><u>SEOC Preparedness Level</u> Level 2 – Heightened Awareness</p>	<p>http://ready.alaska.gov</p>	<p><u>National Terrorism Advisory System:</u> Read the updated NTAS Bulletin here</p>
<p><u>Maritime Security (MARSEC)</u> Level:1-Minimum Appropriate Security Measures</p>	<p>WHO Novel Coronavirus Pandemic (COVID-19): 2019 Novel Coronavirus</p>	<p><u>Alaska Military Installation Force Protection Level:</u> FPCON Bravo</p>

(Significant changes from previous situation reports are in red.)

Significant Issues:

Matanuska-Susitna Borough Wind Storm:

The SEOC continues to work with the Mat-Su Borough on their response to the windstorm and extreme cold weather last weekend. An emergency management specialist remains deployed to the Mat Su Borough EOC by the SEOC. **As of 7:15 A.M. today, MEA still has 27 connections in Mat-Su without power.**

Interior Winter Storm:

The SEOC continues to work with the Fairbanks North Star and Denali Boroughs, and Delta Junction to address damage assessment and individual assistance issues.

Threat Level Changes:

None

State of Alaska Department of Health and Social Services (DHSS)

DHSS is now leading the State of Alaska COVID-19 Recovery through Department Operations, supported by SEOC and other state departments as required.

For current COVID-19 information, see:

<https://covid19.alaska.gov/>

<https://www.cdc.gov/coronavirus/2019-ncov/index.html>

NTAS BULLETIN

To read current or expired advisories, click the link below:

<https://www.dhs.gov/national-terrorism-advisory-system>

Travel Alerts and Conditions

For current driving conditions dial 511 or link to <http://511.alaska.gov/>

Barry Arm Landslide / Tsunami Risk

For the latest information on the Barry Arm Landslide and Tsunami risk, click here:
[DGGG Barry Arm Landslide and Tsunami Hazard](#)

Recent Earthquakes

USGS Earthquake Information: <http://earthquake.usgs.gov/>
National Tsunami Warning Center: <http://tsunami.gov/>

Alaska Volcanoes

Great Sitkin Alert Level: **Watch** and Aviation Color Code: **Orange**
Pavlof Alert Level: **Watch** and Aviation Color Code: **Orange**
Semisopchnoi Alert Level: **Watch** and Aviation Color Code: **Orange**
For Alaska Volcano updates, go to: <https://www.avo.alaska.edu/>

Air Quality Index (AQI) Advisories

A Stage Two Alert is in effect for Fairbanks and North Pole until 2:00pm today

For the most up to date Air Quality Index Advisories:
<http://dec.alaska.gov/Applications/Air/airtoolsweb/Home/Index>

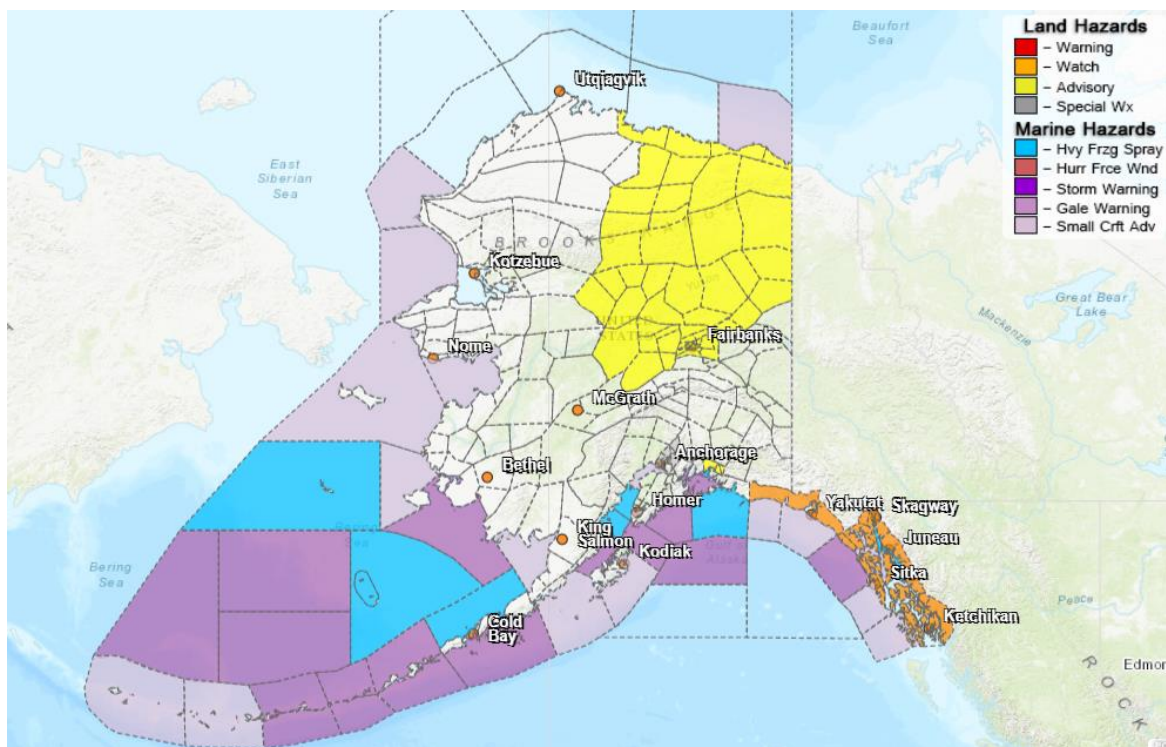
Spills of Oil and Hazardous Substances

The ADEC Spill Prevention and Response page is located at:
<http://dec.alaska.gov/spar/ppr/spill-information/response/>

Alaska Cyber Security Information

State Employees may sign up for cyber security notifications and alerts at
<https://oit.alaska.gov/security>

Significant Weather:



Winter Storm Watches due to heavy snow accumulation up to 24 inches and wind gusts up to 50mph are in effect beginning Saturday afternoon through Sunday afternoon for the entire Southeast from the Northeast Gulf Coast south to Ketchikan. These winter storm warnings are also expected to be followed by rain/freezing rain conditions as the system moves through the area.

A Special Weather Statement remains in effect for the Matanuska Valley. Sustained winds of 20 to 35 mph with gusts to 45 mph are expected to return to the region Friday afternoon and continue into Saturday morning. Wind chills ranging from 10 to 25 degrees below zero are also expected across the area.

Wind Chill Advisories and Warnings are in effect for the following areas:

- Northeast Prince William Sound until 11pm Saturday
- Northeaster and Southeastern Brooks Range until 6pm Saturday
- Yukon Flats, Central Interior, Middle Tanana Valley and the Upper Koyukuk Valley beginning at 6pm tonight until noon Monday
- Central Beaufort Sea Coast until midnight tonight
- Eastern Beaufort Sea Coast until 6pm Saturday

For more information and the most current weather, Watches / Warnings / Advisories go to: <http://www.weather.gov/arh>.

Avalanche Forecast:



There are areas near Haines and Chilkat Lake with moderate risk, and areas near Valdez, the Richardson Highway and Cordova with moderate and considerable risk.

Check the Avalanche Forecast Center closest to your area for the most up to date information on avalanche potential. <https://alaskasnow.org> or <https://www.weather.gov/afc/avalancheweather>

The Next Situation Report: will be 10 January 2022. A significant change in the situation or the threat level will prompt an interim report.

This report is posted on the internet at <https://ready.alaska.gov/sitrep>. To register for email distribution, go to <http://list.state.ak.us/mailman/listinfo/dhsem.situation.report>. Direct questions regarding this report to the SEOC at 907-428-7100 or seoc@alaska.gov